



CURRENT AND DIRECTION RECORDER TS 1020

The TECMES Model TS 1020 Directional Corneograph is a device for measuring and recording speed and direction of currents in rivers, estuaries, etc.

Autonomous operation, allows operation submerged for long periods with minimal maintenance

Made of non-oxidizable metals, it has a mechanism of great robustness and durability.

Your electronics records the speed of the current and direction using an electronic compass for very long periods of time without replacing your batteries.

With very few moving parts, only the propeller with its magnets inserted, make this equipment a very reliable instrument.

SPECIFICATIONS

- Range:** Speed: 0,05 to 8 m/seg
- Address:** 0 to 360 °
- Precision:** Speed: 1,5% for reading by above 0.15 m / sec.
Address: +/- 5 °
- Propeller:** Styrene 125 mm in diameter
- Subjection:** To operate suspended from a cable.
- Data register:** Configurable in 1, 10, 15, 20, 60, 120, 360 and 720 minutes
- Measurement time:** Configurable in 1, 15, 30, 60 y 120 seconds
- Configuration and Data download:** Via USB port or via RF by air 100m reach, via AS1020 interface to PC
- Registration Capacity:** 30.000 data
- Power Supply:** 4 AA alkaline batteries, up to 12 months of autonomy (measuring every 15 minutes)
- Dimensions:** Length 72 cm, fin width 14 cm and height 27 cm.
- Weight:** 12 Kg

IT INCLUDES

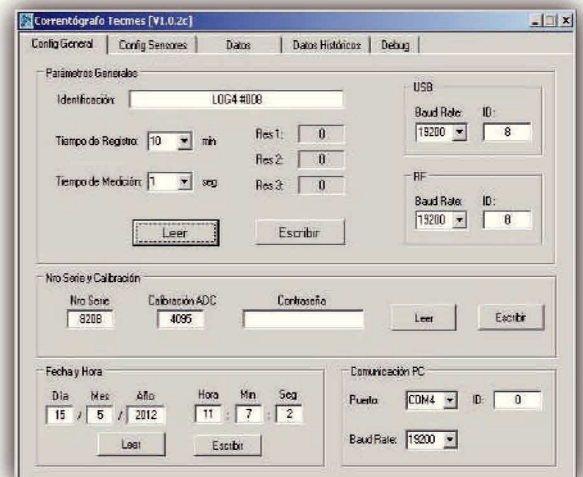
- PC communication interface Model AS 1020
- Replacement Propeller Shaft
- Carrying case
- User manual in Spanish and English



FEATURED FEATURES

- Acquirer and Autonomous Registrar
- Measures Direction and Speed of the current
- Very low consumption. Great autonomy
- Operation via RF link
- Minimum maintenance

Autonomous Equipment



**Other specifications and ranges available upon request.*